

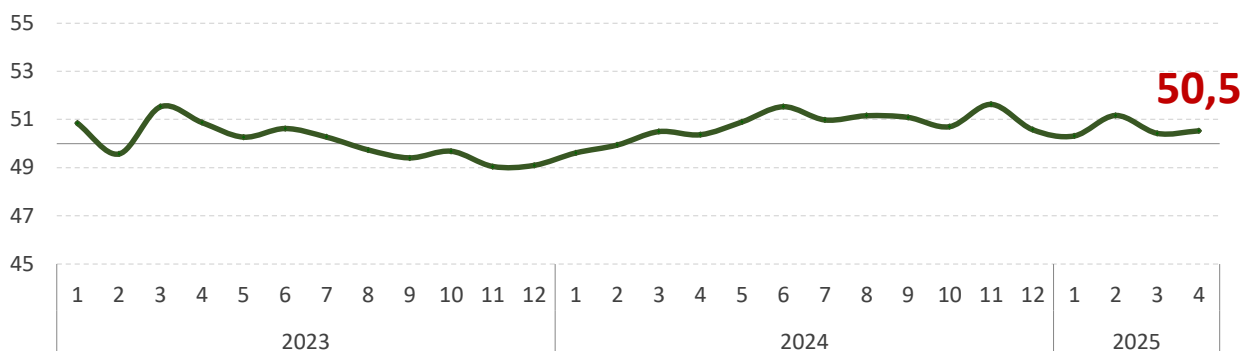


Business activity index

April 2025

Business activity increased slightly in April 2025, and the indicator has been in a positive zone since March last year.

Graph 1. Dynamics of business activity index (BAI)*



* A value of the indicator above level 50 means a positive change, below level 50 - a negative. The further (higher or lower) the index value is from the 50 level, the higher the rate of change (increase or decrease) of the indicator.

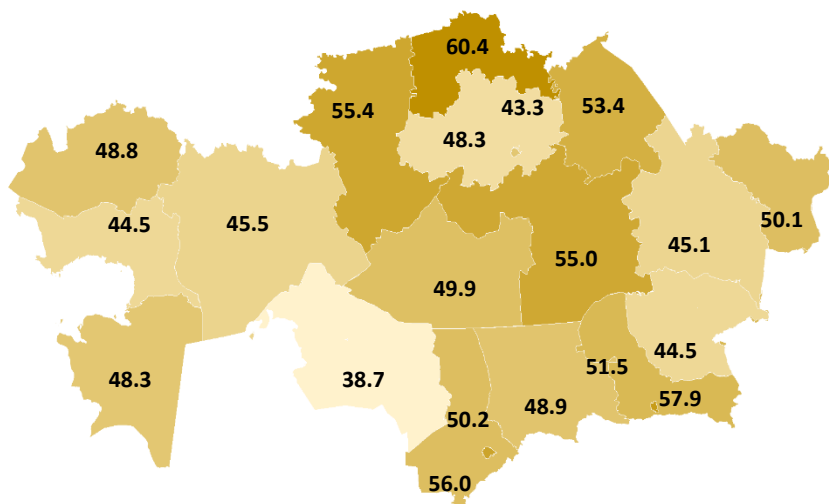
The business activity was 50.5 in April 2025.

Sustained activity was noted in production and trade, in which the index remained in positive area, amounting to **52.9** and **51.1**, respectively (in March – 54.0 and 51.1). The dynamics improved in the services sector, but the indicator remained in the negative area, amounting to **49.9** (in March – 48.9), while in construction, on the contrary, the dynamics worsened, the index dropped to **48.7** from 49.7 in March. In the mining industry, the indicator remained almost unchanged – **48.5** (in March – 48.6). There was a decrease in the volume of new orders in the construction and mining industries.

Graph 2. BAI in April 2025 by regions

Business activity improved in 9 regions, worsened in 11 regions.

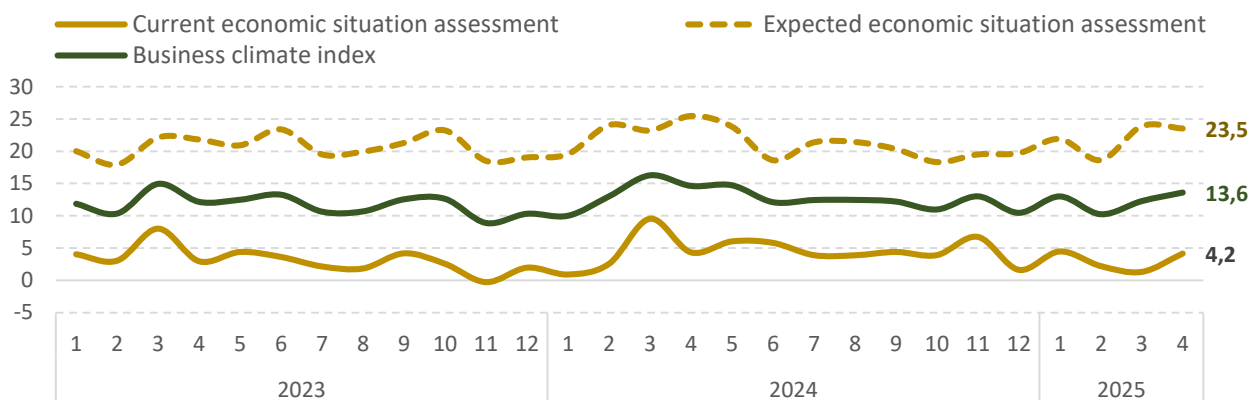
The highest index value was observed in North Kazakhstan region (60.4), the lowest – in Kyzylorda region (38.7).



Business climate index

In April, the business climate index increased to 13.6 due to an improved assessment of current business conditions.

Graph 3. Dynamics of business climate index (BCI)*



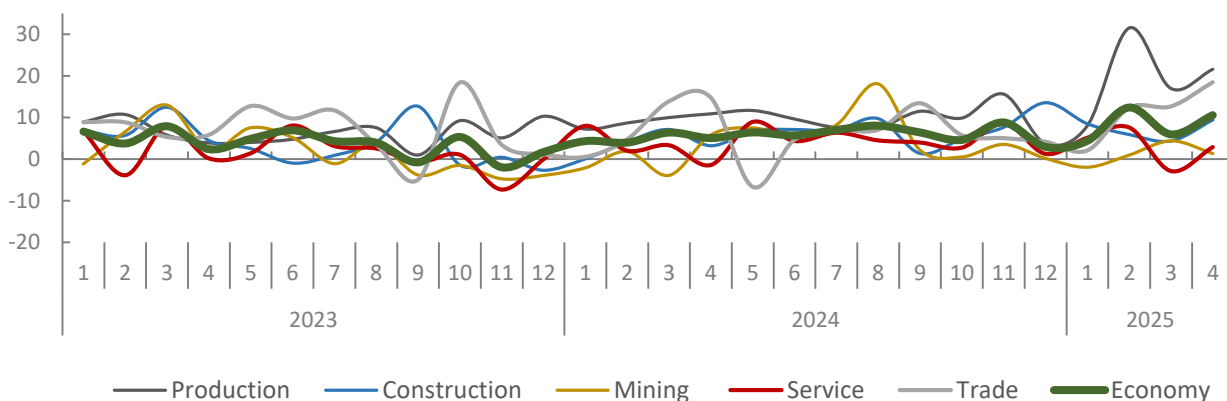
* To assess current and future business conditions, a balance of responses (BR) is used, which is calculated as the difference between the shares of positive and negative answers to questions about changes in business conditions. An index value above 0 indicates an improvement, below 0 indicates a deterioration of the situation.

According to enterprises, the demand for their products/services increased.

Demand increased in all sectors in April. Only the mining industry recorded a slowdown in demand growth. The greatest demand was registered in production and trade.

Assessment of business conditions factors have not changed much. Respondents had a weakly positive assessment of the change in infrastructure, while other factors (business protection issues, tax burden, and access to finance/credit) were negatively assessed, especially the tax burden and business protection issues.

Graph 4. Dynamics of demand changes by sector (BR)*



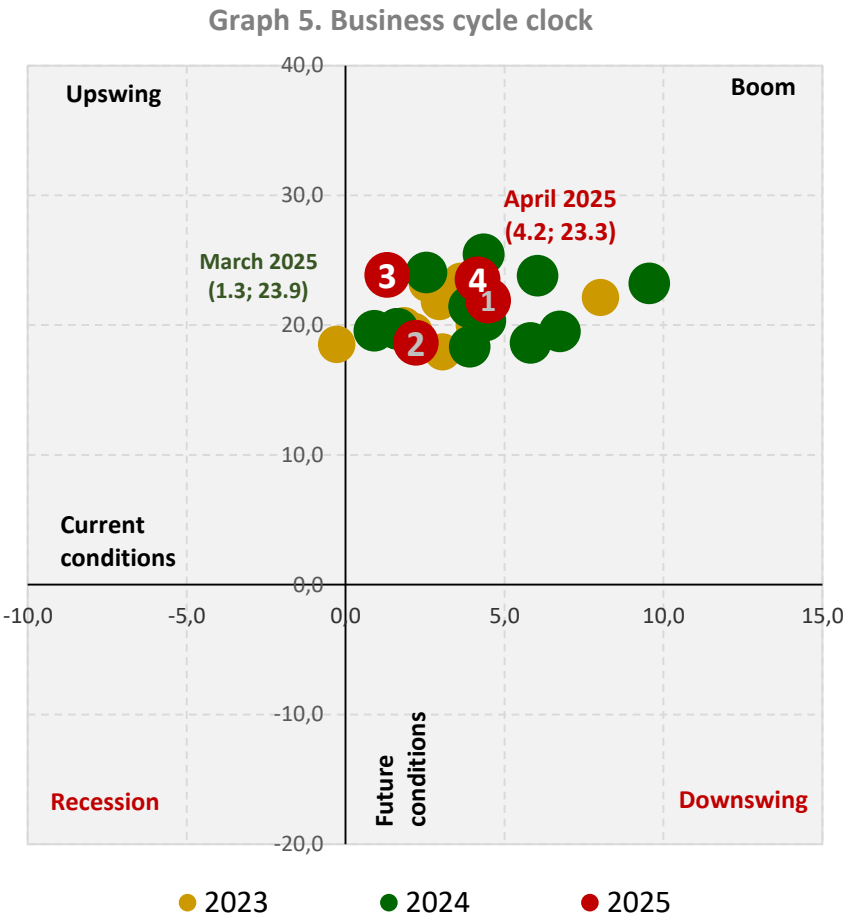
* To assess demand, a balance of responses (BR) is used, which is calculated as the difference between the shares of positive and negative answers to questions about changes in demand. An index value above 0 indicates an improvement, below 0 indicates a deterioration of the situation.

In April 2025, the business cycle clock indicator remained in the boom area

The current business conditions increased and amounted to 4.2

The assessment of future business conditions for the next 6 months amounted to 23.3.

** Business cycle clock is developed by Ifo institute demonstrates in which phase of the cycle the economy was in a certain period. To construct it the series of current conditions (X axis) and future conditions (Y axis) assessments are used.*



METHODOLOGICAL COMMENT

¹ The information was prepared based on the results of monthly survey of enterprises participating in the monitoring of the real sector.

² The business activity index is calculated as an aggregated change in such indicators of enterprises as the volume of new orders, the level of employment, the volume of new products, the volume of inventories, delivery times.

³ To calculate the Business Activity Index, the diffusion index (DI) is used, which is calculated as the sum of positive responses and half of the responses unchanged. This index is a generalized indicator characterizing the dynamics of changes in the indicator.

⁴ To calculate the business climate index (BCI), according to the methodology of the Ifo Institute, a balance of answers (BA) on indicators of business conditions in the current month (SIT) and expected changes in business conditions in the next 6 months (EXP) is used:

$$BCI^* = \sqrt{(BA(SIT) + 200) * (BA(EXP) + 200)} - 200$$

where, BA – balance of answers

SIT – current economic condition

EXP – expected economic condition

⁵ The BA (balance of answers) is calculated as the difference between the shares of positive and negative responses to questions about changing business conditions. Enterprises choose one of the three suggested answers "improved", "have not changed" and "worsened". The response shares are calculated using weights.

⁶ The business cycle clock, developed by the Ifo Research Institute, is a diagram (coordinate system) divided into four quadrants using the crosshair of two zero lines, which from the point of view of the business situation refer to the four stages of the economic cycle: upswing, expansion, downswing, recession. If the assessment of current conditions is negative and expectations are positive, the economy is in the upswing area, if both the assessment of current conditions and expectations are positive, then the economy is in the expansion phase, etc.

⁷ The data in the diagrams are seasonally adjusted (except for the assessment of future conditions and the assessment of factors).

⁸ Changes are possible in the previous months dynamics due to seasonal clearing and GVA adjustment.

⁹ Detailed information by sector (information about the sample, the dynamics of indicators, the results of the distribution of responses) is presented in the dashboard.